

Occupational Health and Safety Situation in Thailand

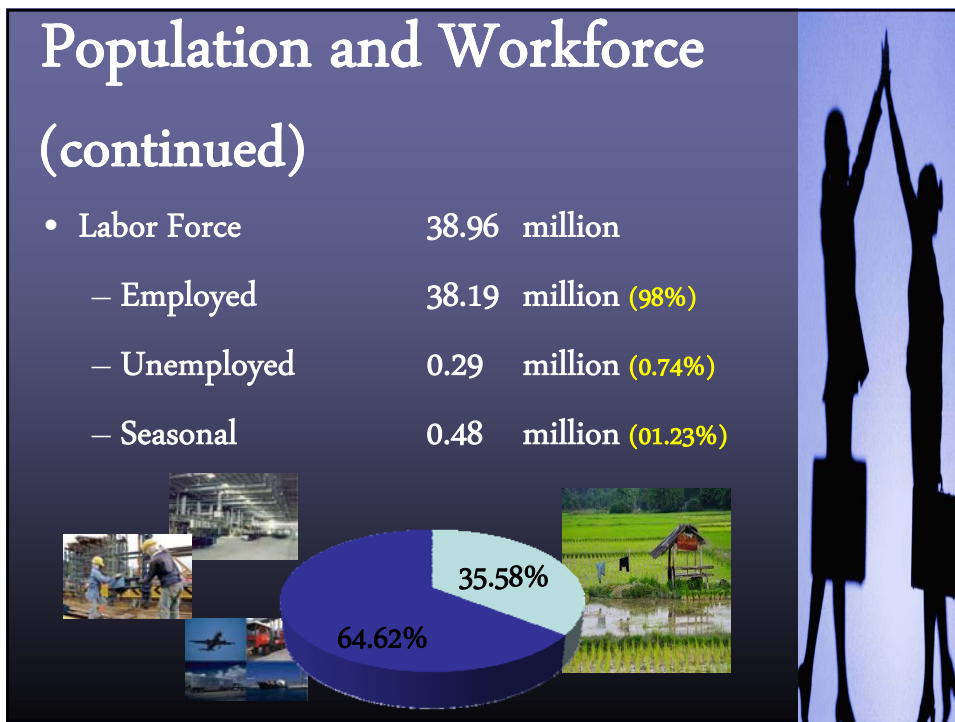
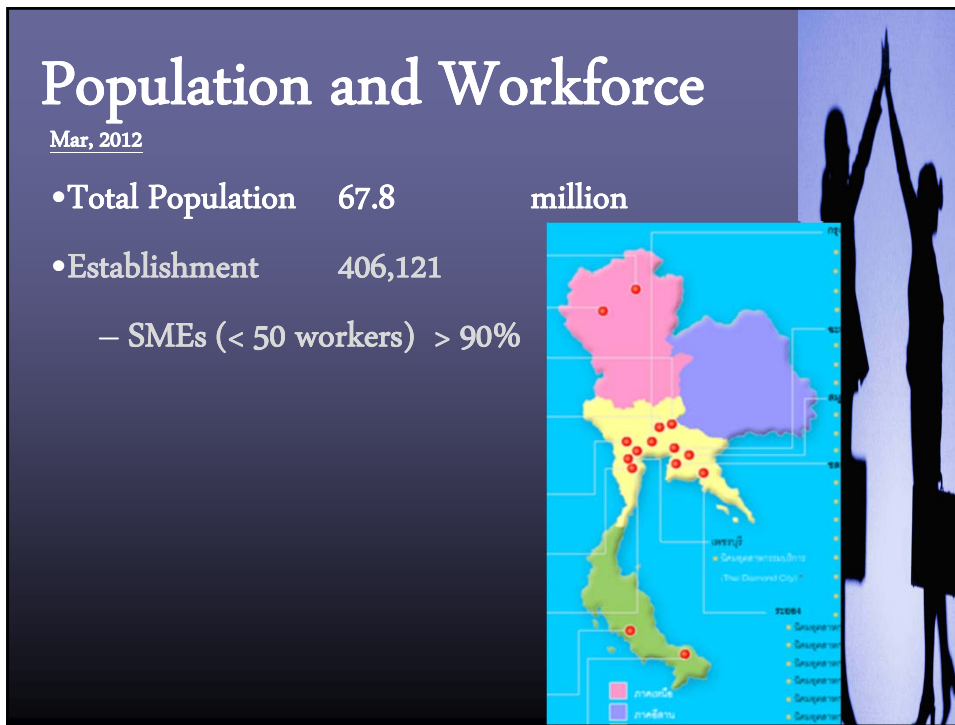
Rattigorn Songpiriyakij
Occupational Health Nurse
The Shell Company of Thailand Ltd.



OUTLINE

- Population and Workforce
- Situation on Occupational Injury and Disease
- Country Administrative System
- Regulation
- Occupational Health and Safety Expertise
- Occupational Health and Safety Personnel
- Issues&Opportunity

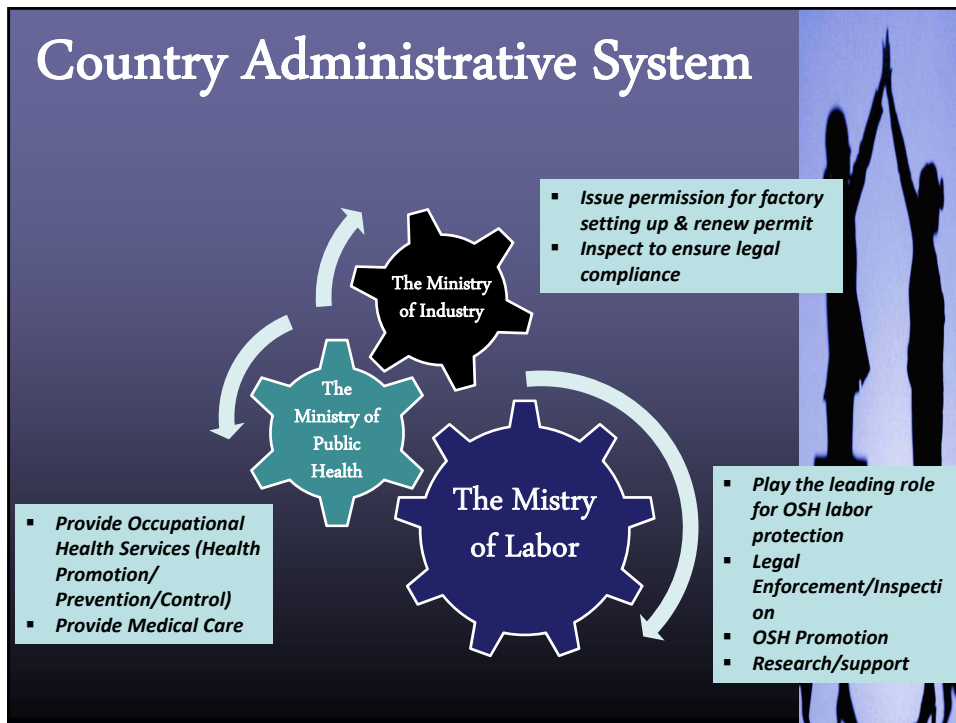


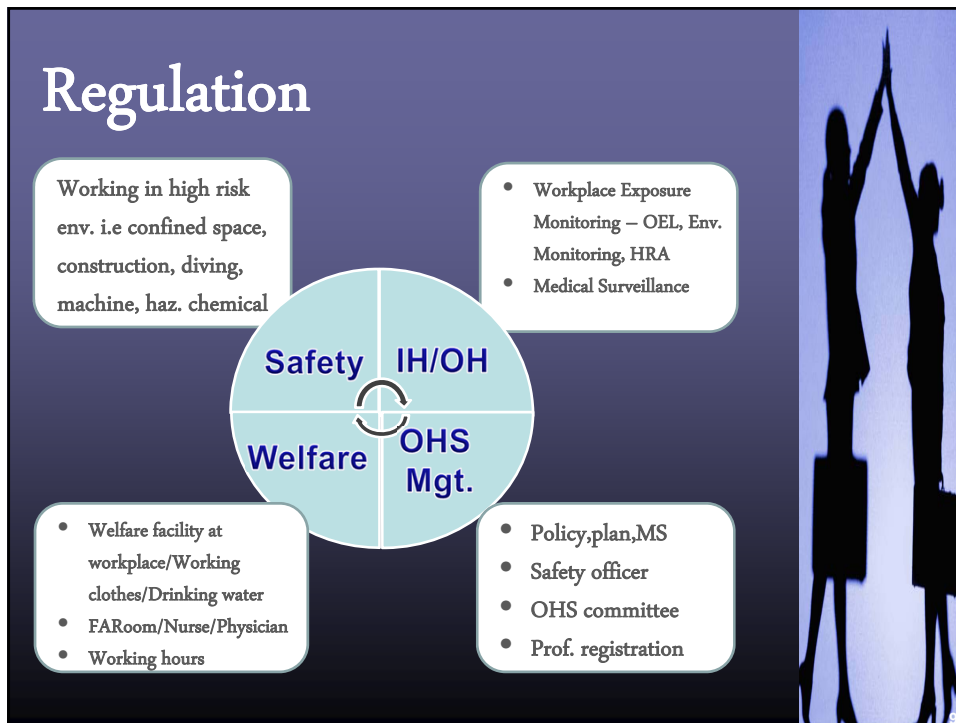


Situation on Occupational Injury and Disease

- Each year, approximately 150,000-200,000 workers (3-5%) reported occupational injury and disease
- Most of work related accident (58.61%) happened in SMEs
- Main cause of injury: Cutting by sharp objects/tools/machines
- Work-related musculo-skeletal disorders is major occupational disease





Occupational Health and Safety

Expertise

1. Government Agencies

Ministry of Labour

- Occupational Safety and Health Bureau www.oshthai.org
- Workmen Compensation Fund, Social Security Office www.sso.go.th

Ministry of Public Health www.moph.go.th

- Bureau of Occupational and Environmental Diseases, Department of Disease Control <http://www.envocc.org/html/>

Ministry of Industry

- Department of Industrial Works www.diw.go.th
- Safety Technology Bureau www2.diw.go.th/safety/



Occupational Health and Safety

Expertise (continued)

2. Non-government Organizations

- Safety and Health at Work Promotion Association (Thailand) www.shawpat.or.th
- Occupational Health and Safety at Work Association www.ohswa.or.th
- Ergonomics Society of Thailand www.est.or.th
- Safety at Work Promotion Foundation
- The Association of Occupational and Environmental Diseases of Thailand www.occmednop.org
- Occupational Health Nursing Association of Thailand



Occupational Health and Safety Expertise (continued)

3. International Collaboration

- A Member of ASEAN – OSHNET
- ILO-CIS National - Collaborating Centre
- MOU with Korea Occupational Safety and Health Agency (KOSHA)




Occupational Health and Safety Expertise (continued)

4. Academic

- Mahidol University <http://www.mahidol.ac.th/>
- Khon Kaen University <http://www.kku.ac.th/eng/>
- Burapha University <http://www.ph.buu.ac.th/index.php>
- Thammasat University <http://www.tu.ac.th/default.tu/newtu/tu.eng/>
- Walailak University <http://www.wu.ac.th/eng/>
- Sukhothai Thammathirat Open University <http://www.stou.ac.th/>





Occupational Health and safety

Personnel


Occupational physician (n ≈ 600)

Board of Occupational Medicine /Residency program/Two months training

OHN (n ≈ 1500)

- Master degree program
- Four months training
- Sixty hours training

Copyright 2014 American Association of Occupational Health Nurses



Occupational Health and safety

Personnel (continued)

HSSE/IH/OH (n ≈ 4200)

Bachelor of Science (OH and Safety/IH and Safety)	2846
Master of Science (OH and Safety/IH and Safety)	314
Bachelor of Science (Public Health) Major in OH and Safety	494
Bachelor of Public Health Program in OH and Safety	14
Bachelor of Science (Safety Science)	348
Bachelor of Engineering (Safety Management Engineering)	220

As of 2012, source: Occupational Safety and Health Bureau (OSH Bureau)

Issues & Opportunity

- Asbestos Abatement
- HRA
- Exposure Monitoring/Assessment
- CIH Preparation



References

- Occupational Safety and Health Bureau (OSH Bureau)
- The Social Security Office (SSO)
- Bureau of Occupational and Environmental Disease
- Thailand Institute of Occupational Safety and Health (TIOSH)

